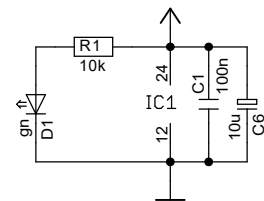
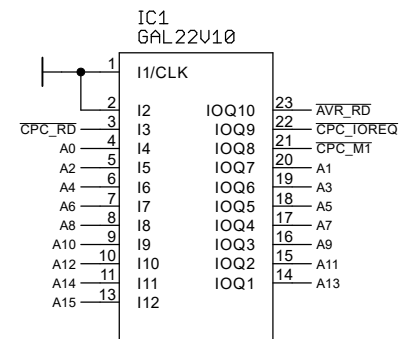
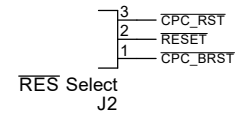
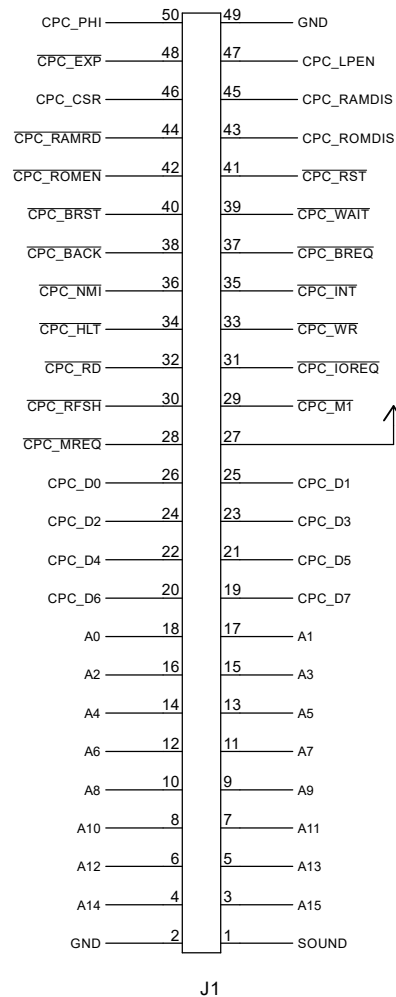


## CPC Exp-port

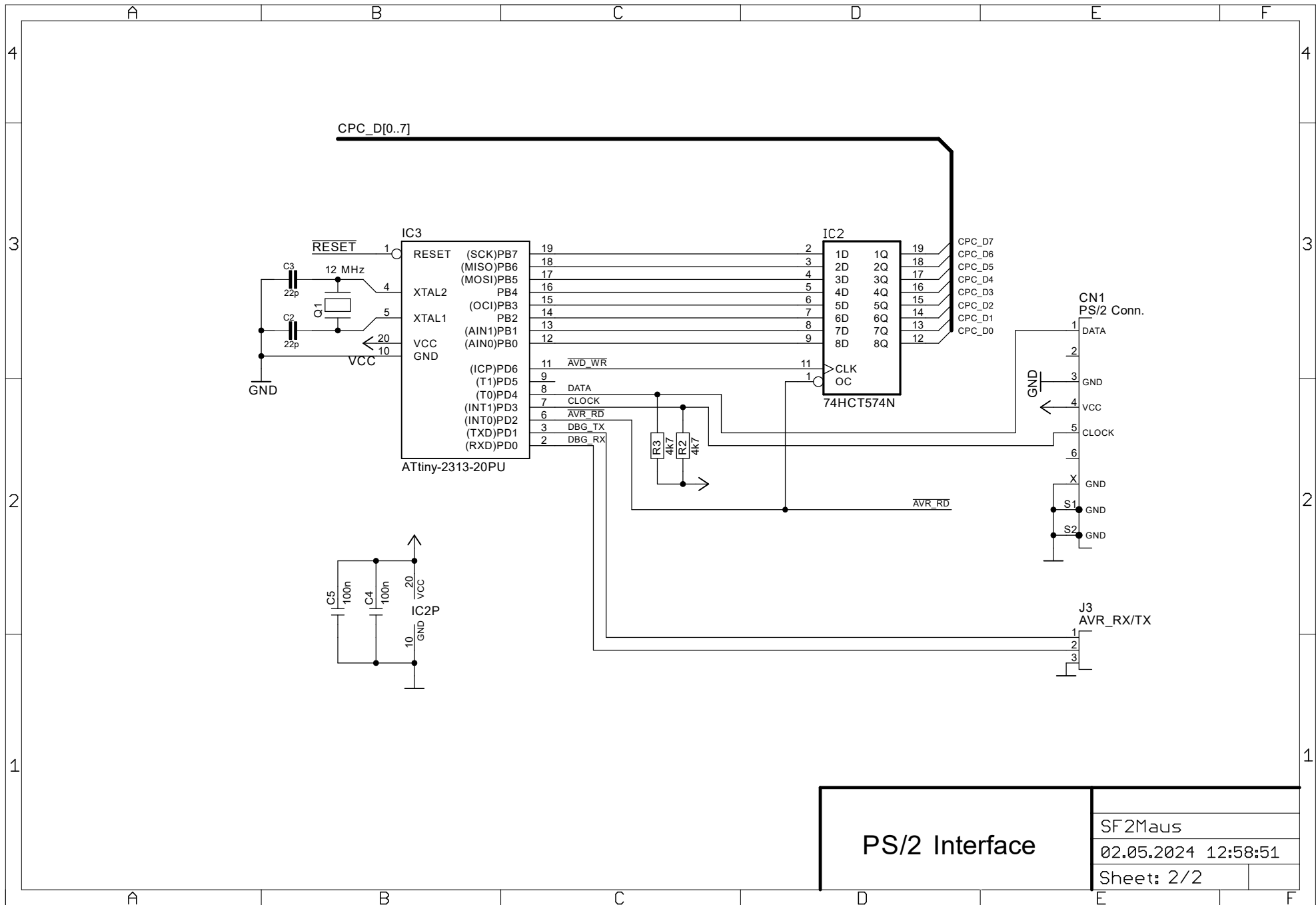


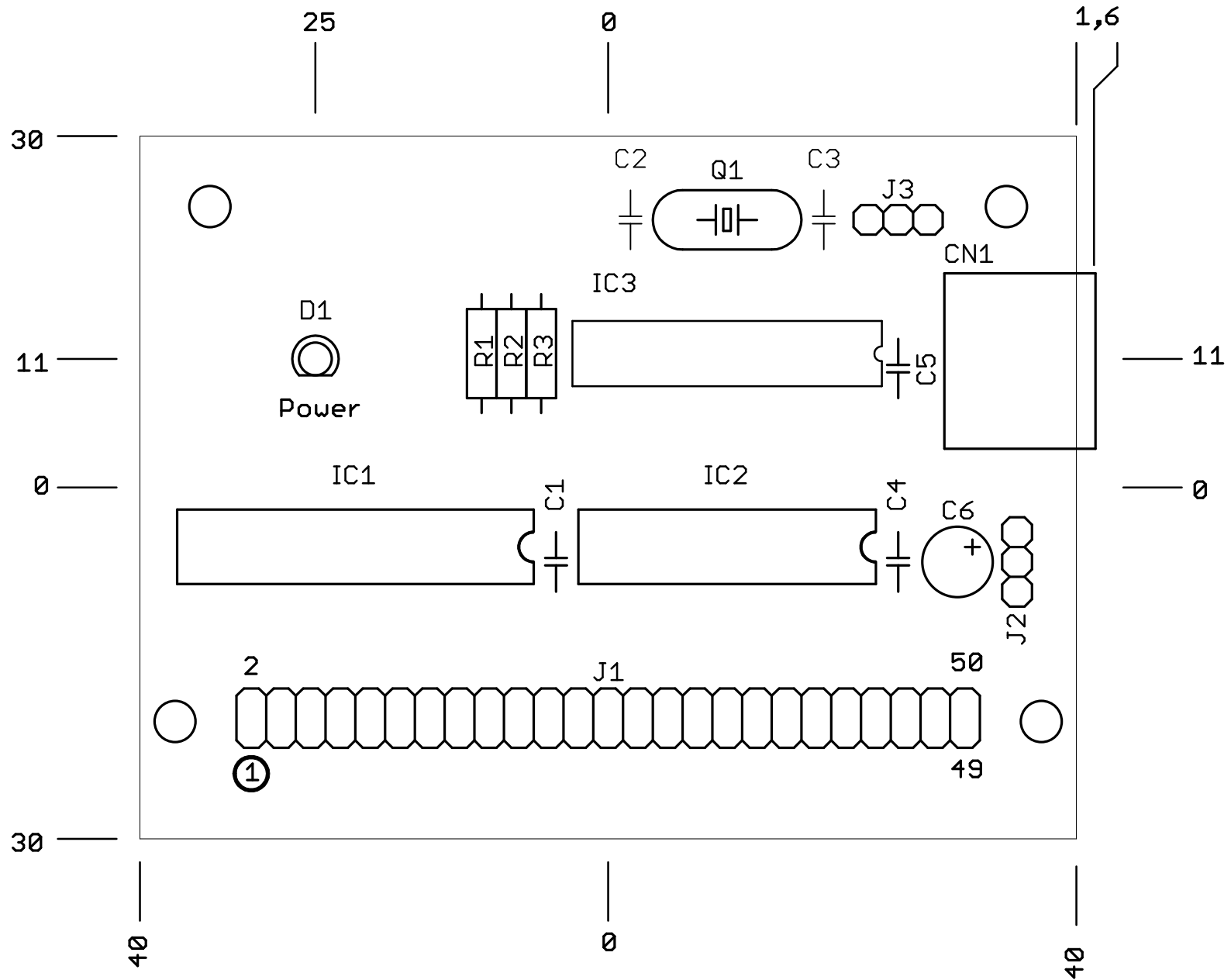
Connectors  
& Adr.-Decoder

SF2Maus

02.05.2024 12:58:51

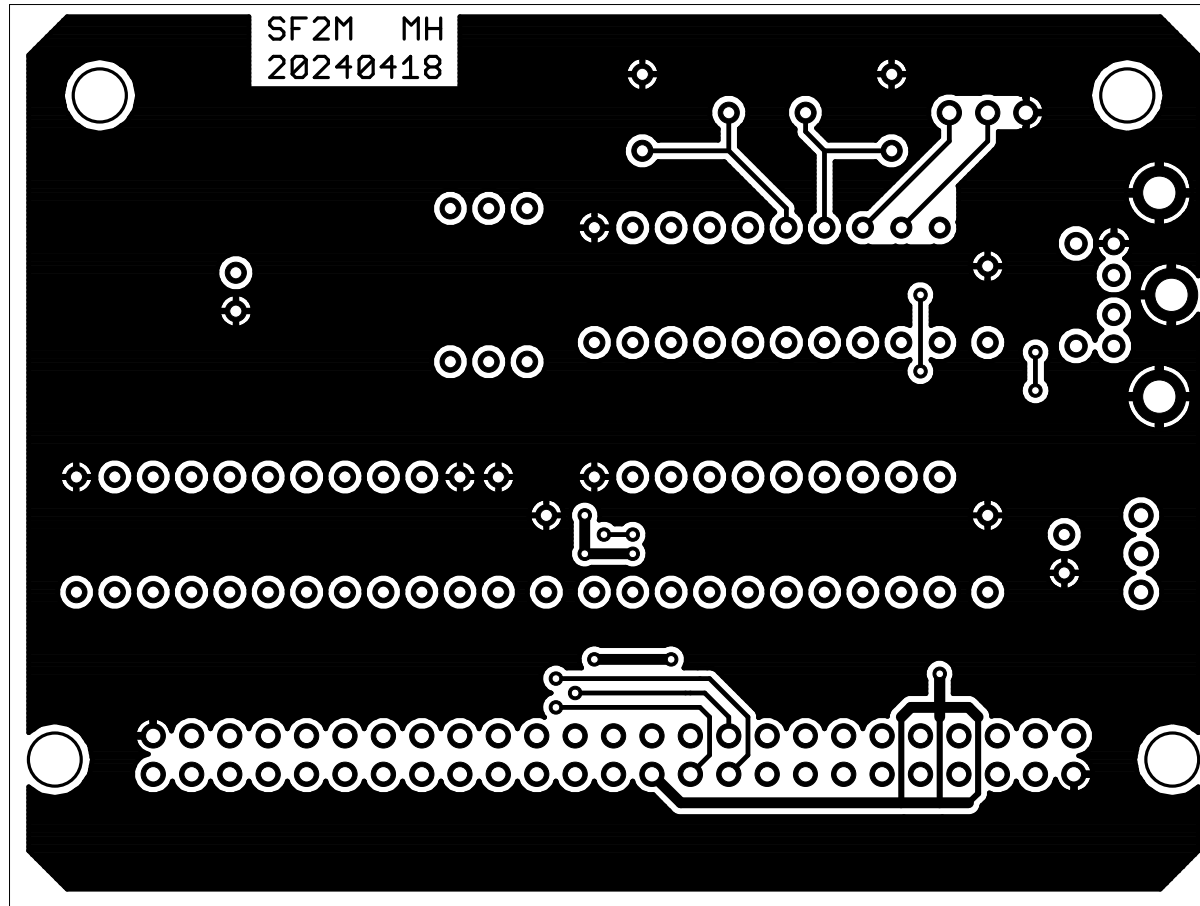
Sheet: 1/2





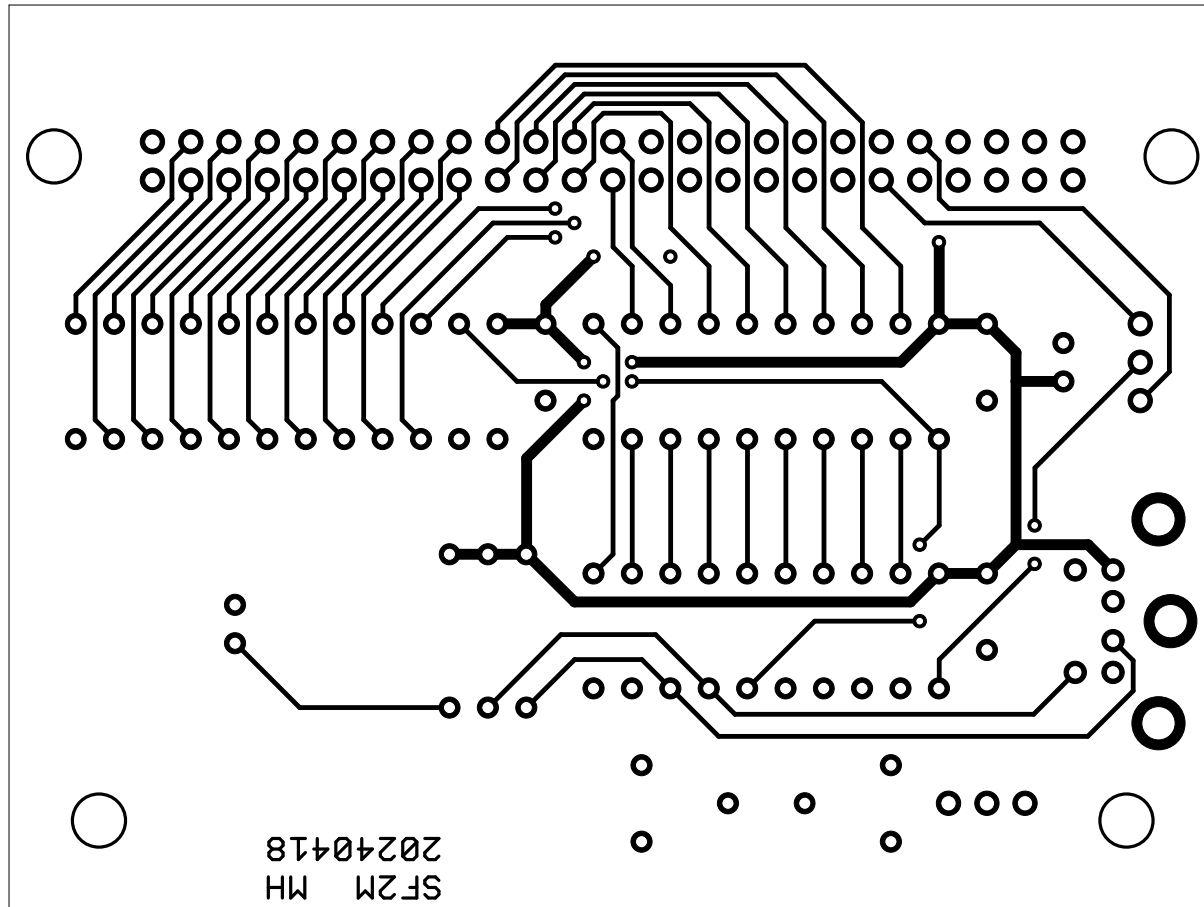
SF2Maus

03.05.2024 08:02:34



SF2Maus

03.05.2024 08:02:34



;----- Declaration Segment -----

TITLE SF2M\_DEC\_FD10  
PATTERN 01  
REVISION 01  
AUTHOR MH  
COMPANY NGSYSTEMS  
DATE 20.4.2024

CHIP SF2M PALCE22V10

PIN 1 NC  
PIN 2 NC  
PIN 3 CPC\_RD  
PIN 4 A0  
PIN 5 A2  
PIN 6 A4  
PIN 7 A6  
PIN 8 A8  
PIN 9 A10  
PIN 10 A12  
PIN 11 A14  
PIN 12 GND

PIN 13 A15  
PIN 14 A13  
PIN 15 A11  
PIN 16 A9  
PIN 17 A7  
PIN 18 A5  
PIN 19 A3  
PIN 20 A1  
PIN 21 CPC\_M1  
PIN 22 CPC\_IORQ  
PIN 23 AVR\_RD  
PIN 24 VCC

SIGNATURE = SF2M

;----- Boolean Equation Segment -----

EQUATIONS

; 1 1 1 1 1 1 0 1 = IO Adr:0xFD10  
/AVR\_RD = A15 \* A14 \* A13 \* A12 \* A11 \* A10 \* /A9 \* A8 \*  
; 0 0 0 1 0 0 0 0  
/A7 \* /A6 \* /A5 \* A4 \* /A3 \* /A2 \* /A1 \* /A0 \*  
CPC\_M1 \* /CPC\_IORQ \* /CPC\_RD